

		5	15	25	35	45	55	65	75	85	95											
2618	3,51	4,40	5,16	5,56	5,92	6,20	6,51	6,84	7,20	7,67	8,51	9,53										
															5,8	7,1						
		8 16 14		13 12 9		6 D		17 3 15		5		10		N	n	-	o	+	p	P		
2005		N	n	-	o	+	p	P					4,16	5,01	5,51	6,01	6,44	6,95	7,77			
		N	n-	o	+	p	P						19%	2%	-19%	-13%	-33%	7%	19%			
		N	n	o-	+	p	P						5,06	5,35	5,45	5,91	6,34	6,54	7,19			
		N	n	o-	+	p	P						5,06	5,35	5,45	5,91	6,34	6,54	7,19			
													-66%	-20%	-33%	-38%	-17%	-41%	-66%			
2004		14 8 13 16 12 6 15 9				D 3		7		15		10		4,26	5,11	5,51	5,86	6,24	6,79	7,92		
		N	n	-	o	+	p	P					0%	-2%	15%	-20%	-35%	-11%	0%			
		N	n	o-	+	p	P						4,91	5,34	5,83	5,80	6,27	6,31	7,22			
		N	n	o-	+	p	P						4,91	5,34	5,83	5,80	6,27	6,31	7,22			
													-29%	-41%	-42%	-32%	-51%	-18%	-29%			
2003		14		8 9			16 15 6 7 D 3 12			13 1 5		10		4,54	5,33	5,75	6,12	6,46	7,02	7,99		
		N	n	-	o	+	p	P					15%	-7%	-12%	-19%	-1%	-4%	15%			
		Nn	-	o	+	p	P						5,26	5,54	6,01	6,07	6,32	6,83	7,17			
		Nn	-	o	+	p	P						5,26	5,54	6,01	6,07	6,32	6,83	7,17			
													-30%	-39%	-31%	-21%	-39%	-17%	-30%			
2002		8 14				16		12 9 7 3		6 D 13		15 15		10		4,64	5,49	6,01	6,41	6,79	7,18	7,99
		N	n	-	o	+	p	P					-11%	3%	4%	-32%	-1%	-16%	-11%			
		N	n	o-	+	p	P						5,30	5,93	6,19	6,35	6,49	6,99	7,27			
		N	n	o-	+	p	P						5,30	5,93	6,19	6,35	6,49	6,99	7,27			
													-41%	-32%	-40%	-16%	-38%	-29%	-41%			
2001		8 9				14		6 D 3 17 16 12 5 13			15		10		4,84	5,67	6,17	6,58	7,00	7,47	8,41	
		N	n	-	o	+	p	P					-1%	35%	-21%	-14%	-60%	-5%	-1%			
		N	n	-	o+	p	P						5,58	5,96	6,38	6,51	6,81	7,07	7,81			
		N	n	-	o+	p	P						5,58	5,96	6,38	6,51	6,81	7,07	7,81			
													-59%	-25%	-27%	-28%	-28%	-41%	-59%			
2000		8 9				6		14 16 D 1 7 3		13 5 12		15 10		5,01	5,93	6,38	6,85	7,27	7,87	8,82		
		N	n	-	o	+	p	P					0%	-11%	-20%	-3%	-31%	-17%	0%			
		N	n	o-	+	p	P						5,64	6,28	6,39	6,79	7,32	7,55	8,16			
		N	n	o-	+	p	P						5,64	6,28	6,39	6,79	7,32	7,55	8,16			
													-40%	-44%	-45%	-52%	-47%	-26%	-40%			
1999		8 9				6		3 D 14 7 1			10 12 5 16		13 15		5,00	5,86	6,38	6,85	7,31	7,94	8,88	
		N	n	-	o	+	p	P					-88%	-98%	-98%	-99%	-99%	-98%	-88%			
		N	n	-	o	+	p	P					5,73	6,39	6,70	7,01	7,10	7,45	7,84			
		N	n	-	o+	p	P						5,73	6,39	6,70	7,01	7,10	7,45	7,84			
													-30%	-13%	-4%	-7%	-30%	-50%	-30%			

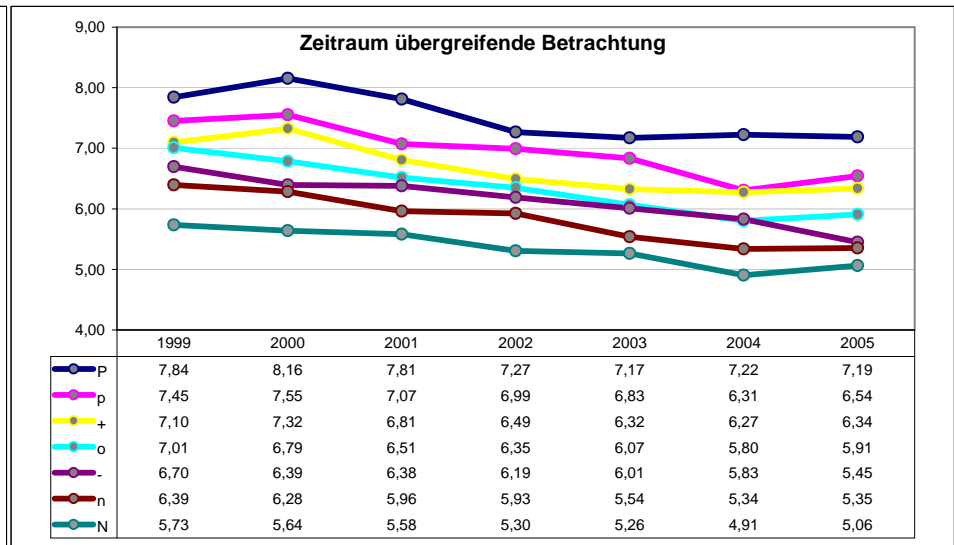
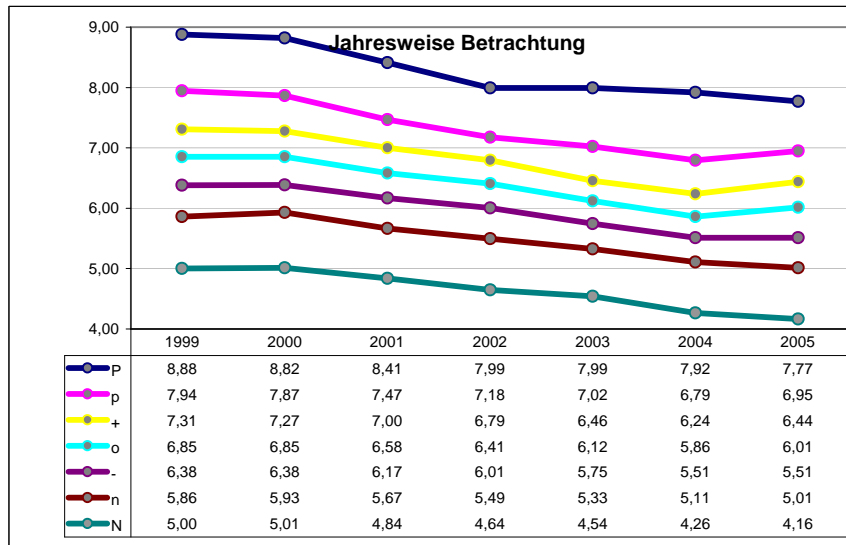
[60_65]_w

Average:

Avg:	N	n	-	o	+	p	P
6,40	4,64	5,49	5,96	6,39	6,79	7,32	8,26
6,40	5,36	5,83	6,14	6,35	6,67	6,96	7,52

Trends:

Avg:	-	o	+	p	P		
-2,8%	-3,3%	-2,9%	-2,9%	-2,8%	-2,7%	-2,7%	-2,4%
-2,8%	-2,5%	-3,3%	-3,1%	-3,2%	-2,6%	-2,8%	-2,1%



2618	5	15	25	35	45	55	65	75	85	95										
8,55	10,14	11,36	12,21	12,89	13,51	14,03	14,69	15,37	16,44	18,12	20,63			12,8	15,5					
2005	8	9 6	1 14 D 3 7 13	16 12 5	15			10						N	n	-	o	+	p	P
	N	n	-	o	+	p		P						9,47	10,79	11,69	12,39	13,08	13,95	15,68
	N	n	-	o	+p			P						-18%	-25%	-19%	-22%	-47%	-15%	-18%
														9,99	11,26	11,75	12,74	13,01	13,50	14,72
														-36%	-62%	-59%	-56%	-52%	-46%	-36%
2004	8	9 6 14	7 D 3 12 1	16 5	13	15 10								N	n	-	o	+	p	P
	N	n	-	o	+	p		P						9,75	11,18	12,10	12,80	13,50	14,40	16,13
	N	n	-o	+	p			P						-18%	-29%	-31%	-19%	-31%	-22%	-18%
														10,49	11,41	12,51	12,87	13,13	13,97	15,37
														-51%	-53%	-63%	-47%	-63%	-40%	-51%
2003	8	9 14	6 1	D 7 3 5	12 16	15	13 10							N	n	-	o	+	p	P
	N	n	-	o	+	p		P						10,04	11,67	12,74	13,52	14,18	15,06	16,77
	N	n	-	o	+p			P						-14%	-57%	-18%	-6%	-23%	-33%	-14%
														10,87	11,99	12,89	13,32	14,29	14,58	15,93
														-61%	-51%	-45%	-59%	-65%	-49%	-61%
2002	8	6 9 1	14 D	7 16 3 5	12	10 15	13							N	n	-	o	+	p	P
	N	n	-	o	+	p		P						10,57	12,01	13,00	13,87	14,60	15,56	17,52
	N	n	-	o	+p			P						-16%	-34%	-36%	-44%	-30%	-9%	-16%
														11,15	12,25	13,23	14,01	14,75	15,21	16,45
														-56%	-71%	-62%	-62%	-49%	-34%	-56%
2001	8	6	9	3 D 14	17 5 16	15 12	10 13							N	n	-	o	+	p	P
	N	n	-	o	+	p		P						11,02	12,53	13,53	14,41	15,19	16,35	18,47
	N	n	-	o	+p			P						-16%	-38%	-41%	-32%	-36%	-18%	-16%
														11,53	12,94	13,64	14,71	15,04	15,77	17,73
														-58%	-72%	-64%	-64%	-59%	-56%	-58%
2000	8	6 9	1	3 D 7	5 14	16 10 12 15	13							N	n	-	o	+	p	P
	N	n	-	o	+	p		P						11,25	13,08	14,05	14,83	15,63	16,75	18,77
	N	n	-	o	+p			P						-17%	-43%	-45%	-47%	-28%	-45%	-17%
														11,85	13,28	13,96	14,96	15,53	16,73	17,94
														-59%	-72%	-67%	-74%	-72%	-48%	-59%
1999	8	9 6	1	3 D 7	5 14 10	12 15 16 13								N	n	-	o	+	p	P
	N	n	-	o	+	p		P						11,65	13,25	14,09	15,03	16,07	17,20	19,30
	N	n	-	o	+p			P						-85%	-99%	-99%	-99%	-99%	-97%	-85%
														12,29	13,57	14,66	15,02	15,64	17,14	18,19
														-52%	-67%	-64%	-59%	-47%	-49%	-52%

[60_65]_m

Average:	Avg:	N	n	-	o	+	p	P	Trends:	Avg:	-3,5%	-3,6%	-3,6%	-3,3%	-3,3%	-3,5%	-3,6%	-3,6%
	13,89	10,54	12,07	13,03	13,84	14,61	15,61	17,52		-3,5%	-3,3%	-3,3%	-3,3%	-3,2%	-3,3%	-4,1%	-3,7%	
	13,87	11,17	12,39	13,23	13,95	14,48	15,27	16,62										

