

1685	5	15	25	35	45	55	65	75	85	95	
0,69	0,84	1,04	1,15	1,23	1,31	1,38	1,45	1,56	1,69	1,96	2,27

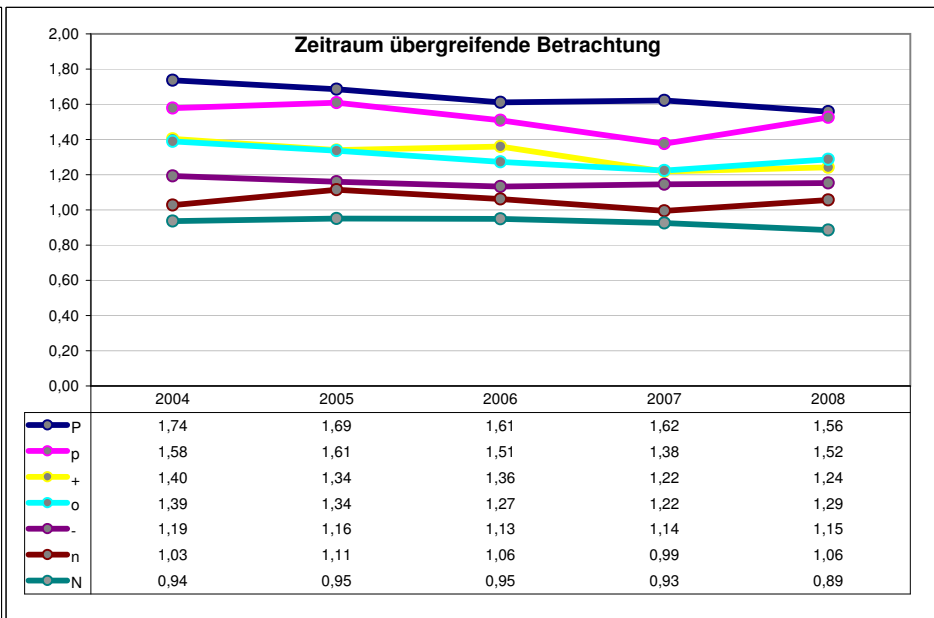
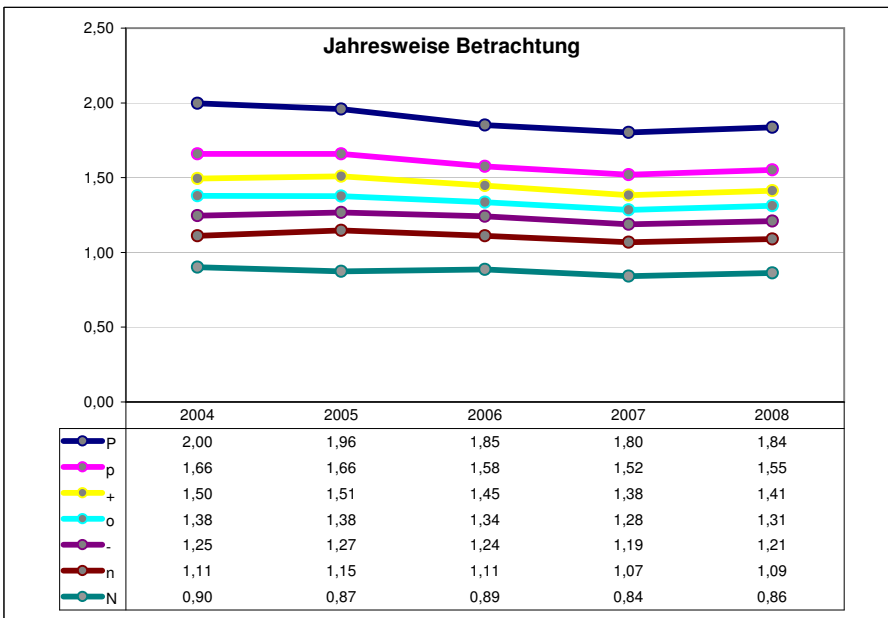
1,2 1,6

	N	n	-	o	+	p	P													
2008	86	9	14	D 12	37	10	5 1 16	15	0,86	1,09	1,21	1,31	1,41	1,55	1,84					
	N	n	-	o	+	p	P		-79%	-98%	-99%	-99%	-99%	-97%	-79%					
	N	n	-	+o		p	P		0,89	1,06	1,15	1,29	1,24	1,52	1,56					
									22%	86%	114%	52%	81%	-33%	22%					
2007	8	9	12	14	16	D 3	7 1 10 5	15	0,84	1,07	1,19	1,28	1,38	1,52	1,80					
	N	n	-	o	+	p	P		-83%	-99%	-99%	-99%	-99%	-96%	-83%					
	Nn	-	+o			p	P		0,93	0,99	1,14	1,22	1,22	1,38	1,62					
									10%	76%	114%	29%	103%	-22%	10%					
2006	8	6	9	16	14	7	D	5	3	1	10	12	15	0,89	1,11	1,24	1,34	1,45	1,58	1,85
	N	n	-	o	+	p	P		-84%	-97%	-99%	-99%	-98%	-98%	-84%					
	N	n-		o	+	p	P		0,95	1,06	1,13	1,27	1,36	1,51	1,61					
									21%	96%	70%	52%	138%	-28%	21%					
2005	8	16	14	9	6	7	D	13	12	5	10	15	0,87	1,15	1,27	1,38	1,51	1,66	1,96	
	N	n	-	o	+	p	P		-83%	-98%	-99%	-99%	-98%	-98%	-83%					
	N	n	-	o+		p	P		0,95	1,11	1,16	1,34	1,34	1,61	1,69					
									22%	75%	65%	28%	87%	-16%	22%					
2004	14	9	8	6	D 12	7	3	5	10	1	15	16	0,90	1,11	1,25	1,38	1,50	1,66	2,00	
	N	n	-	o	+	p	P		-75%	-98%	-99%	-99%	-99%	-97%	-75%					
	Nn	-		o+		p	P		0,94	1,03	1,19	1,39	1,40	1,58	1,74					
									13%	32%	63%	45%	99%	-37%	13%					

[40_50]_w

Average:	Avg:	N	n	-	o	+	p	P
	1,35	0,87	1,11	1,23	1,34	1,45	1,59	1,89
	1,27	0,93	1,05	1,16	1,30	1,31	1,52	1,64

Trends:	Avg:	-1,7%	-1,2%	-1,1%	-1,3%	-1,7%	-2,0%	-2,2%	-2,5%
	-1,9%	-1,4%	-0,6%	-0,8%	-2,4%	-3,4%	-2,2%	-2,6%	



1745	5	15	25	35	45	55	65	75	85	95								
1,40	1,59	1,85	2,03	2,19	2,33	2,50	2,66	2,87	3,11	3,69	4,30			2,3	3,0			
2008	8 9 7 6 5 3 D 1 10 14 16 12 15										N	n	-	o	+	p	P	
	N n - o + p P										1,57	1,83	2,06	2,27	2,48	2,83	3,38	
	N n - o + p P										-79%	-99%	-99%	-99%	-98%	-96%	-79%	
	N n - o + p P										1,78	1,96	2,04	2,20	2,39	2,70	2,87	
	N n - o + p P										255%	-74%	-76%	-68%	7%	40%	255%	
2007	8 6 7 9 5 1 D 3 10 16 12 14 15										N	n	-	o	+	p	P	
	N n - o + p P										1,66	1,96	2,18	2,40	2,63	2,89	3,43	
	N n - o + p P										-75%	-99%	-99%	-99%	-99%	-98%	-75%	
	Nn - +o p P										1,89	1,93	2,25	2,45	2,41	2,70	2,89	
	Nn - +o p P										304%	-80%	-58%	-54%	13%	33%	304%	
2006	8 6 7 9 1 5 D 3 10 16 14 12 15										N	n	-	o	+	p	P	
	N n - o + p P										1,66	2,01	2,21	2,42	2,61	2,94	3,65	
	N n - o + p P										-76%	-99%	-99%	-99%	-98%	-95%	-76%	
	Nn - o + p P										1,88	2,03	2,27	2,34	2,51	2,80	3,07	
	N n - o + p P										272%	-80%	-71%	-51%	-7%	32%	272%	
2005	8 9 7 6 10 5 D 3 1 16 12 14 15										N	n	-	o	+	p	P	
	N n - o + p P										1,65	2,03	2,28	2,50	2,74	2,99	3,59	
	N n - o + p P										-81%	-98%	-99%	-99%	-99%	-98%	-81%	
	N -n +o p P										1,82	2,22	2,20	2,55	2,54	2,78	3,02	
	N n - +o p P										286%	-75%	-62%	-66%	14%	30%	286%	
2004	8 6 9 7 5 D 3 1 10 16 14 12 15										N	n	-	o	+	p	P	
	N n - o + p P										1,77	2,08	2,35	2,61	2,84	3,16	3,81	
	N n - o + p P										-77%	-99%	-98%	-99%	-98%	-97%	-77%	
	N n - o+ p P										1,87	2,14	2,39	2,67	2,68	2,97	3,23	
	N n - o+ p P										281%	-84%	-76%	-63%	0%	16%	281%	

[40_50]_m

Average:	Avg:	N	n	-	o	+	p	P
	2,50	1,66	1,98	2,22	2,44	2,66	2,96	3,57
	2,41	1,85	2,05	2,23	2,44	2,51	2,79	3,02

Trends:	Avg:	-2,9%	-2,4%	-2,9%	-3,1%	-3,3%	-3,2%	-2,6%	-2,8%
	-2,7%	-0,6%	-3,2%	-3,0%	-4,2%	-2,8%	-2,2%	-2,8%	

