

2527	5	15	25	35	45	55	65	75	85	95							
0,70	0,86	1,07	1,19	1,28	1,36	1,44	1,53	1,63	1,78	2,01	2,30	1,2	1,6				

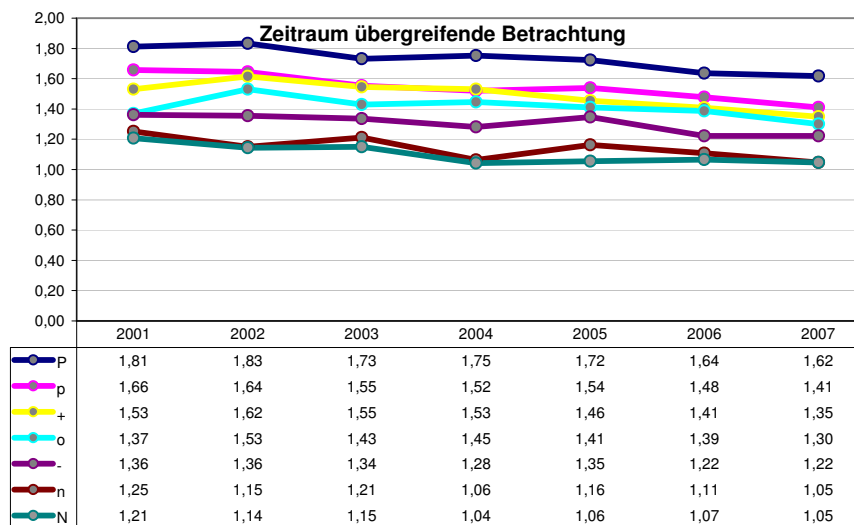
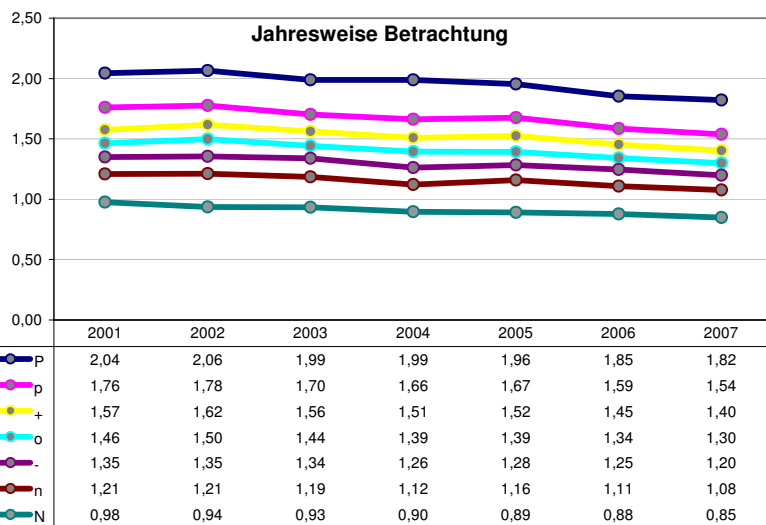
	N	n	-	o	+	p	P
2007	8	9	12	14	16	6	3
	7	1	10			5	13
	15						
	0,85	1,08	1,20	1,30	1,40	1,54	1,82
	-85%	-99%	-99%	-99%	-99%	-97%	-85%
	1,05	1,05	1,22	1,30	1,35	1,41	1,62
	-37%	50%	19%	-7%	-56%	17%	-37%
2006	8	6	9	16	14	7	5
	3					10	12
	13						15
	0,88	1,11	1,25	1,34	1,45	1,59	1,85
	-85%	-97%	-99%	-99%	-98%	-98%	-85%
	1,07	1,11	1,22	1,39	1,41	1,48	1,64
	-36%	69%	-12%	-9%	7%	-11%	-36%
2005	8	16	14	9	6	7	
	6					13	3
	1					12	5
	10						15
	0,89	1,16	1,28	1,39	1,52	1,67	1,96
	-84%	-98%	-99%	-99%	-98%	-98%	-84%
	1,06	1,16	1,35	1,41	1,46	1,54	1,72
	-42%	92%	-1%	-41%	-25%	19%	-42%
2004	14	9	8			6	
	6					12	7
	3					5	13
	10					16	15
	1						
	0,90	1,12	1,26	1,39	1,51	1,66	1,99
	-81%	-98%	-99%	-99%	-99%	-97%	-81%
	1,04	1,06	1,28	1,45	1,53	1,52	1,75
	-48%	33%	1%	-47%	-17%	-7%	-48%
2003	8	9				6	
	12	16	14			3	7
	15					3	7
	15						10
	13						
	0,93	1,19	1,34	1,44	1,56	1,70	1,99
	-84%	-97%	-99%	-99%	-99%	-97%	-84%
	1,15	1,21	1,34	1,43	1,55	1,55	1,73
	-29%	67%	18%	-20%	-34%	29%	-29%
2002	8	14	9			7	
	16	6	1			12	
	10					5	15
	3						10
	13						
	0,94	1,21	1,35	1,50	1,62	1,78	2,06
	-80%	-98%	-99%	-99%	-99%	-98%	-80%
	1,14	1,15	1,36	1,53	1,62	1,64	1,83
	-37%	37%	9%	-23%	-29%	-6%	-37%
2001	8	14	9	12		7	
	6					13	
	3					15	5
	10						
	0,98	1,21	1,35	1,46	1,57	1,76	2,04
	-86%	-98%	-99%	-99%	-99%	-97%	-86%
	1,21	1,25	1,36	1,37	1,53	1,66	1,81
	-5%	65%	-13%	-13%	-40%	19%	-5%

Average:

Avg:	N	n	-	o	+	p	P
1,42	0,91	1,15	1,29	1,40	1,52	1,67	1,96
1,39	1,10	1,14	1,30	1,41	1,49	1,54	1,73

Trends:

Avg:	N	n	-	o	+	p	P
-2,1%	-2,1%	-2,0%	-2,0%	-2,2%	-2,1%	-2,3%	-2,1%
-2,1%	-2,4%	-2,3%	-1,8%	-1,3%	-2,5%	-2,5%	-2,0%



2576	5	15	25	35	45	55	65	75	85	95											
1,45	1,70	2,00	2,19	2,36	2,53	2,70	2,89	3,10	3,43	4,03	4,58		2,5	3,3							
												N	n	-	o	+	p	P			
2007	8	6	7	9	5	1	D	10	3	16	12	14	15	13	1,68	1,98	2,20	2,43	2,67	2,95	3,59
	N	n	-	o	+	p		P							-75%	-99%	-99%	-99%	-99%	-98%	-75%
	N	n	-	o	+	p		P							1,87	2,07	2,22	2,42	2,64	2,78	3,48
															-59%	-66%	-64%	-63%	-58%	-72%	-59%
2006	8	6	7	9	5	1	D	3	10	16	14	12	13	15	1,68	2,03	2,24	2,45	2,66	3,02	3,72
	N	n	-	o	+	p		P							-79%	-99%	-99%	-99%	-98%	-95%	-79%
	N	n	-	o	+	p		P							1,92	2,04	2,21	2,51	2,72	2,93	3,48
															-43%	-85%	-67%	-55%	-53%	-54%	-43%
2005	8	9	7	6	10	5	D	3	1	16	12	14	15	13	1,68	2,06	2,32	2,55	2,80	3,08	3,69
	N	n	-	o	+	p		P							-80%	-98%	-99%	-99%	-99%	-97%	-80%
	N	n	-	o	+	p		P							1,87	2,19	2,34	2,49	2,73	3,01	3,53
															-56%	-68%	-73%	-56%	-75%	-55%	-56%
2004	8	6	9	7	5	D	3	10	1	16	14	12	15	13	1,79	2,11	2,39	2,66	2,90	3,25	3,87
	N	n	-	o	+	p		P							-83%	-99%	-98%	-99%	-98%	-96%	-83%
	N	n	-	o	+	p		P							1,92	2,18	2,42	2,67	2,88	3,19	3,72
															-60%	-86%	-70%	-66%	-74%	-67%	-60%
2003	8	9	6	7	9	6	D	3	5	1	10	16	12	14	1,95	2,31	2,50	2,73	2,98	3,38	4,07
	N	n	-	o	+	p		P							-80%	-99%	-99%	-99%	-98%	-97%	-80%
	N	n	-	o	+	p		P							2,11	2,36	2,54	2,78	2,94	3,27	3,92
															-63%	-80%	-86%	-58%	-49%	-70%	-63%
2002	8	6	7	9	5	1	D	3	10	16	12	14	13	15	1,87	2,24	2,52	2,75	3,03	3,39	4,01
	N	n	-	o	+	p		P							-88%	-99%	-99%	-98%	-99%	-95%	-88%
	N	n	-	o	+	p		P							2,02	2,36	2,55	2,76	2,91	3,33	3,88
															-74%	-76%	-75%	-58%	-70%	-68%	-74%
2001	8	6	7	9	5	3	D	10	1	16	12	14	15	13	1,86	2,23	2,51	2,79	3,05	3,42	4,16
	N	n	-	o	+	p		P							-82%	-99%	-99%	-99%	-98%	-95%	-82%
	N	n	-	o	+	p		P							2,13	2,35	2,60	2,64	2,95	3,33	4,01
															-63%	-63%	-73%	-56%	-66%	-63%	-63%

[40_50]_m

Average:	Avg:	N	n	-	o	+	p	P	Trends:	Avg:	-2,5%	-2,4%	-2,3%	-2,5%	-2,6%	-2,6%	-2,7%	-2,4%
	2,70	1,79	2,14	2,38	2,62	2,87	3,21	3,87		-2,5%	-2,4%	-2,3%	-2,5%	-2,6%	-2,6%	-2,7%	-2,4%	
	2,70	1,98	2,22	2,41	2,61	2,82	3,12	3,72		-2,5%	-2,2%	-2,7%	-3,0%	-2,0%	-1,9%	-3,1%	-2,7%	

