

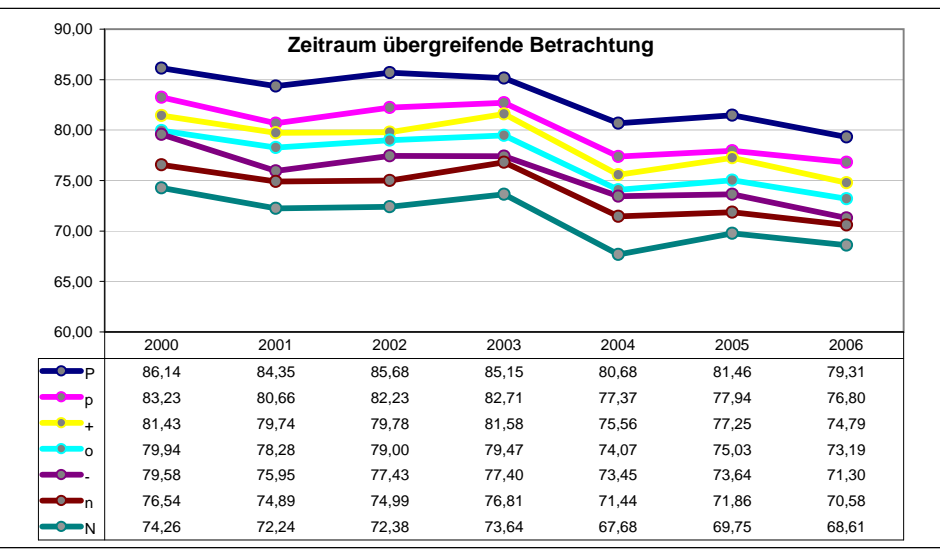
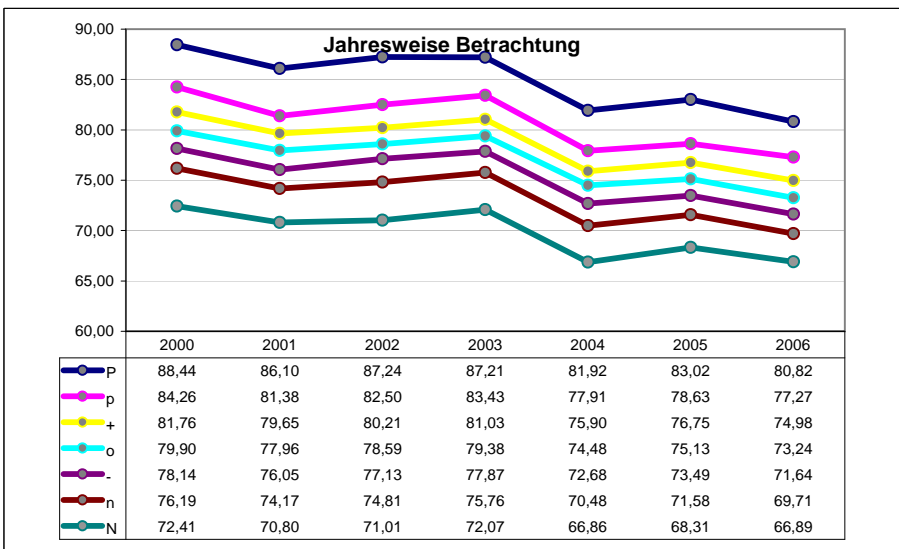
2618	65,04										91,42	74,5	80,4	N	n	-	o	+	p	P		
	5	15	25	35	45	55	65	75	85	95												
2006	8	13	14	6	D	5	7	16	9	3	15	12	10	1	66,89	69,71	71,64	73,24	74,98	77,27	80,82	
	N	n	-	o		+		p			P											
	N	n-	o		+			p			P											
2005	8	6	14		D	9	15	5	13	7	3	16	10	12	1	68,31	71,58	73,49	75,13	76,75	78,63	83,02
	N	n	-	o		+		p			P											
	N	n	-	o		+		p			P											
2004	8	6	14	9		D	7	16	5	3	13	10	15	12	1	66,86	70,48	72,68	74,48	75,90	77,91	81,92
	N	n	-	o		+		p			P											
	N	n	-	o		+		p			P											
2003	8	6	9		D	5	14	16	7	15	3	13	11	10	12	72,07	75,76	77,87	79,38	81,03	83,43	87,21
	N	n	-	o		+		p			P											
	N	n-	o		+			p			P											
2002	8	6	9		D	3	14	5	10	16	13	1	15	12		71,01	74,81	77,13	78,59	80,21	82,50	87,24
	N	n	-	o		+		p			P											
	N	n	-	o		+		p			P											
2001	8	6	9		D	5	10	3	1	13	16	15	12			70,80	74,17	76,05	77,96	79,65	81,38	86,10
	N	n	-	o		+		p			P											
	N	n	-	o		+		p			P											
2000	8	6	9		D	3	5	10	14	1	15	13	16	12		72,41	76,19	78,14	79,90	81,76	84,26	88,44
	N	n	-	o		+		p			P											
	N	n	-	o		+		pP			P											

Avg:	N	n	-	o	+	p	P
77,09	69,77	73,24	75,29	76,96	78,61	80,77	84,96
77,09	71,22	73,87	75,53	77,00	78,59	80,14	83,25

Avg:	-1,4%	-1,3%	-1,4%	-1,4%	-1,4%	-1,4%	-1,4%
-1,4%	-1,3%	-1,3%	-1,6%	-1,5%	-1,3%	-1,3%	-1,3%



	2618										115,10	85,8	95,3												
	5	15	25	35	45	55	65	75	85	95															
71,82	76,40	80,48	83,30	85,51	87,78	89,98	92,44	95,12	98,36	104,73	N	n	-	o	+	p	P								
2006	8	6 D 9 3 14 7 5 13	12 1 10	15 16														73,31	76,73	79,30	81,75	83,71	86,12	89,72	
	N	n-	o	+	p	P												-89%	-97%	-98%	-99%	-98%	-98%	-89%	
	N	n-	o+	p	P												75,18	77,63	80,37	81,83	83,28	85,02	87,32		
																		-66%	-53%	-43%	-50%	-54%	-43%	-66%	
2005	8 6	7 D 9 3 1 5	13 14 12	10 16	15													76,03	79,68	82,02	83,99	86,17	88,74	93,56	
	N	n	-	o	+	p	P											-88%	-98%	-99%	-99%	-99%	-97%	-88%	
	Nn	-	o+	p	P												78,46	80,15	81,87	85,27	85,49	87,33	91,58		
																		-59%	-58%	-61%	-59%	-61%	-38%	-59%	
2004	8	7 6 9	D 3 10 13	5 1 14	12	16 15												75,41	79,72	82,32	84,86	87,12	89,60	94,42	
	N	n	-	o	+	p	P											-89%	-99%	-98%	-99%	-99%	-98%	-89%	
	N	n-	o	+	p	P												77,29	81,14	83,05	84,63	86,25	89,27	91,84	
																		-46%	-79%	-50%	-64%	-41%	-55%	-46%	
2003	8	6 9	D 5 3 1 7	10 14 13	15	12 16												81,80	86,06	88,63	90,92	93,34	96,21	101,15	
	N		n	-	o	+	p	P											-85%	-98%	-99%	-99%	-98%	-99%	-85%
	N		n	-	o	+p	P												83,79	87,11	88,77	91,72	93,40	94,15	99,15
																		-67%	-64%	-54%	-41%	-60%	-50%	-67%	
2002	8	6	9 7 5 D	3 1	10 14 13	16 12 15											81,46	86,17	89,16	91,92	94,46	98,15	104,25		
	N		n	-	o	+	p	P											-80%	-97%	-99%	-99%	-97%	-98%	-80%
	N		n	-o	+	p	P												83,96	87,37	90,12	91,64	93,56	96,99	101,94
																		-60%	-67%	-66%	-49%	-44%	-49%	-60%	
2001	8	6 9	5 D 7 3 1	14 10	16 13 12 15												83,21	88,37	91,34	93,56	95,86	99,40	105,33		
	N		n	-	o	+	p	P											-82%	-98%	-99%	-99%	-99%	-98%	-82%
	N		n	-o	+p	P												85,94	89,97	92,77	92,67	95,39	98,04	102,31	
																		-44%	-54%	-53%	-42%	-52%	-52%	-44%	
2000	8 6 7 9	1 D 3 10	5 14	16 15 12 13												87,31	92,16	95,42	97,90	100,15	103,98	110,37			
	N		n	-o	+p	P												-82%	-97%	-99%	-99%	-99%	-97%	-82%	
	N		n	-o	+p	P												89,72	93,75	96,44	96,54	100,25	103,13	107,49	
																		-50%	-60%	-58%	-61%	-55%	-45%	-50%	

[75\_100]\_m

Average:

Avg:	N	n	-	o	+	p	P
89,43	79,79	84,13	86,89	89,27	91,54	94,60	99,83
89,44	82,05	85,30	87,63	89,19	91,09	93,42	97,38

Trends:

Avg:	-3,0%	-2,8%	-3,0%	-3,0%	-3,0%	-3,0%	-3,2%	-3,4%
-3,1%	-2,8%	-3,1%	-3,1%	-2,6%	-3,1%	-3,2%	-3,4%	

